

YOUR APPOINTMENT IS SCHEDULED:

NAME: \_\_\_\_\_

DATE: \_\_\_\_\_ TIME: \_\_\_\_\_

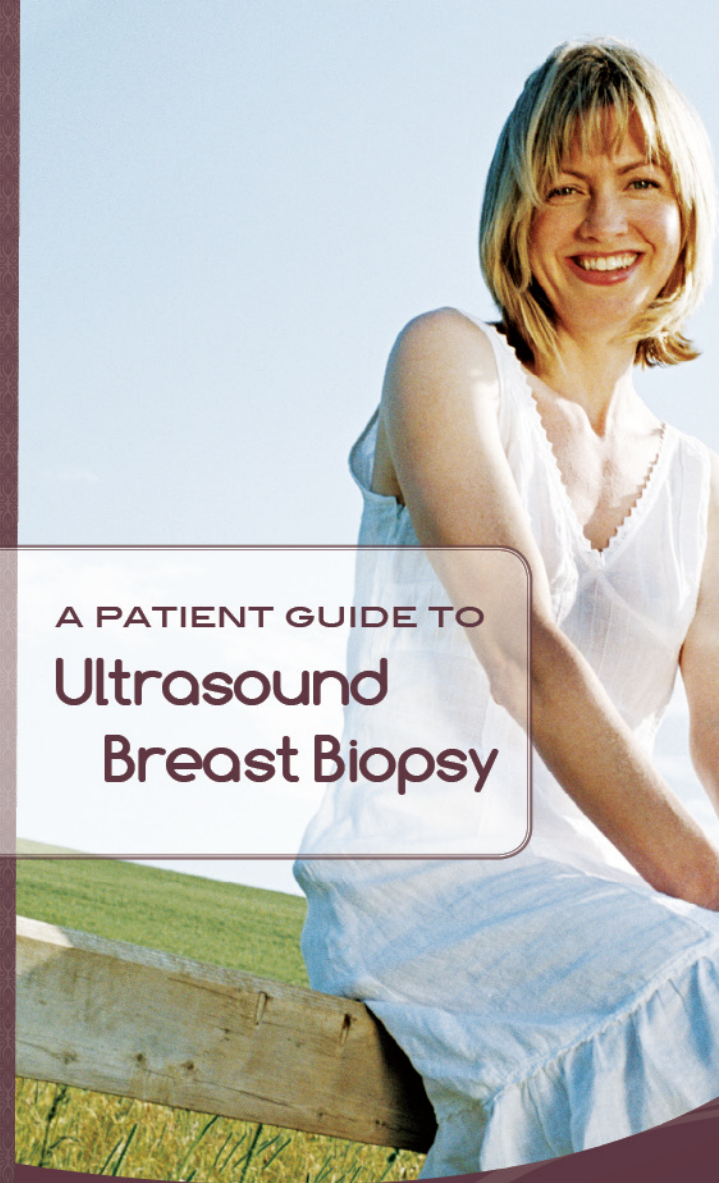
LOCATION: \_\_\_\_\_ DR.: \_\_\_\_\_

MAMMOGRAM:  BILATERAL  UNILATERAL

BREAST ULTRASOUND

Accredited by the American College of  
Radiology for Mammography,  
Ultrasound, Ultrasound Guided Breast  
Biopsy and Stereotactic Breast Biopsy  
Certified by the FDA

A PATIENT GUIDE TO  
**Ultrasound  
Breast Biopsy**



PARKVIEW NORTH MEDICAL OFFICE BLDG.  
11123 PARKVIEW PLAZA DRIVE, SUITE 201  
FORT WAYNE, INDIANA 46845



FW-BREASTDIAGNOSTICCENTER.COM

**breast**  
DIAGNOSTIC CENTER

A JOINT SERVICE OF:

 FWRadiology

 PARKVIEW  
HEALTH

## Introduction

Although mammography is an excellent way to detect breast abnormalities, it is often difficult to know if they are benign (non-cancerous) or malignant (cancerous). Ultrasound-guided biopsy utilizes ultrasound imaging to locate the abnormality and to obtain small samples of it. This procedure may take up to 60 minutes. You will be awake during the biopsy.

## What To Expect When You Arrive

When you arrive at the Breast Diagnostic Center, please stop at the front desk to register and have your insurance card available. Once registration has been completed, you will meet with a member of the Breast Care Team. During this short meeting, you will learn about their services that are available to you. Immediately following, the technologist, who will be with you during the biopsy, will introduce herself and ask you to change into a gown. She will then take you to the procedure room.



## What To Expect During The Biopsy

The technologist will assist you in lying on the examination table. You will lie on your back and be asked to turn slightly on your side. The skin of the breast to be biopsied will be cleansed with an antiseptic solution to help prevent infection. The physician will then administer a local anesthetic (numbing medicine) to minimize any discomfort. The technologist or radiologist/physician will place a transducer (part of the ultrasound machine) on your breast to locate the abnormality. Once the abnormality has been located and the area of your breast is numb, the radiologist/physician will insert a hollow needle through the skin and into the abnormal area. Samples of the cells from this area will be obtained.

The radiologist/physician may need to take more than one sample from more than one area. You may feel pressure as the biopsy is performed. **Please inform the staff immediately if you have any pain during the procedure.** Sometimes a small marker will be placed at the biopsy site for future reference. After the procedure, the technologist will apply pressure to the site for 5-10 minutes to prevent bleeding. A gauze dressing pad will be placed over the site.

## What To Expect After The Biopsy

The technologist will provide you with written instructions on care of the biopsy site and when you can resume taking medications that were stopped prior to the procedure.

A pathologist will examine the cells taken during the biopsy and a report will be sent to your physician and the radiologist who performed the biopsy. This will take about 2-3 working days after the biopsy. You will be contacted about the results either by your physician or the radiologist.

If you have any questions or concerns before or after your biopsy, please call:

### Breast Diagnostic Center

at 260.672.6530 and ask to speak to a technologist.

### Contact

8:00 a.m. - 8:00 p.m.

Monday through Wednesday

8:00 a.m. - 5:00 p.m.

Thursday and Friday

Saturday Mornings by Appointment